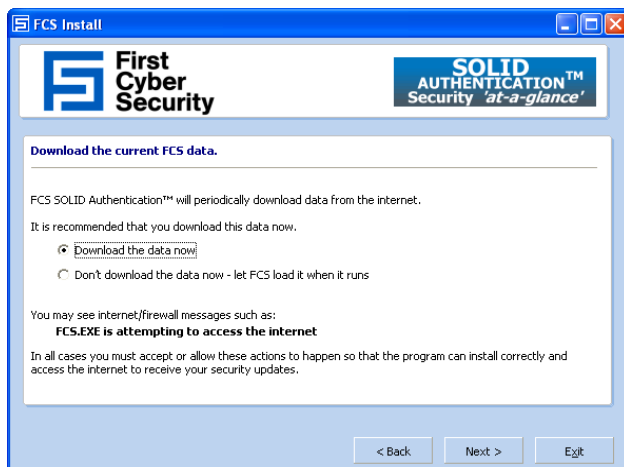


Instructions for Use

Thank you for downloading the SOLID Authentication™ software. It will help you to identify safe and fraudulent web sites *'at-a-glance'*. Just watch the SOLID window, beware of red, be cautious with yellow, and be assured with green.

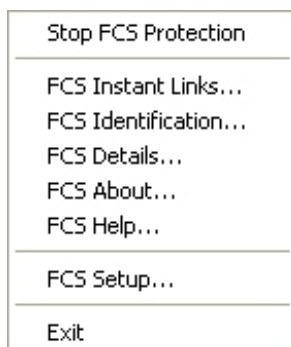
Installation and using SOLID Authentication™



Installation is very simple – just run the **FCSInstall.exe** program. Various screens will appear during installation, including a choice of language, accepting the EULA, and a note about allowing access if you have any Firewall or anti-spyware installed. The installation will prompt you for a location to install the software, which will be the location of any previously installed version. You will then be prompted to download the latest

data the software needs, as shown opposite. At this point, if you have a firewall installed you may get a message from the firewall, in which case you must accept **'Always allow connections from this program on all ports'** (or similar words) which may not be the default option. Similarly, **the first time the program runs** you may again be prompted to allow this access, which you must accept. Without doing this no data can be received and the SOLID window will warn you with an appropriate message in its window.

You may even get a message from your browser the first time it runs after installation. Select "Do not show this warning again" if applicable, and allow the program to run. When you use Internet Explorer or FireFox the FCS SOLID program will run. When you close the last copy of a browser or Explorer SOLID will close. Therefore you can let SOLID take care of starting and stopping automatically. If you wish to manually close SOLID right click



on the icon on the task bar. Several options are displayed. Exit closes the program completely, where as 'Stop FCS Protection' closes the FCS SOLID window but keeps the icon on the task bar where the program can be restarted by right clicking on it.

Important: *If you manually close the program when browsers are open, and then it restarts later (manually or automatically), it will only report on browsers opened after it has been restarted. It is therefore strongly suggested that FCS is not closed when browser windows are still open.*

Setting your 'Unique Identifier'

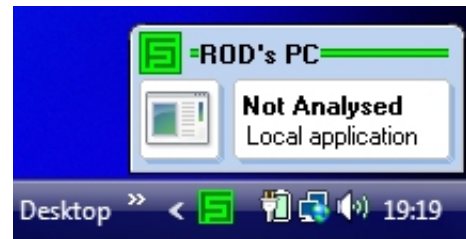
The FCS SOLID program is a separate "always on top" window because rogue software can superimpose fraudulent URL's as well as the secure 'lock' icon in browsers. To prevent any future rogue program from attempting to mimic or replace the SOLID program, during installation you are requested to input a unique identifier, e.g. "Rod's PC". You can change this through the FCS Properties box (left click on FCS window, and select the Identification tab). This unique identifier is then encrypted and always displayed within FCS windows. Rogue programs will not be able to identify your unique identifier as it is held in an encrypted form. Always confirm that you see it. Do not use a name stored elsewhere on your computer such as a registration name you may have used. The position of the FCS window is also remembered and stored in an encrypted form. If you install a new version of FCS it will know your Unique ID and location, a fake update will not, so always look for it.



At the end of the installation you are prompted to re-boot your computer so that the installation can complete. You can also run the setup program in the installation directory or by right clicking on the task bar icon if you wish to uninstall, suspend, resume or change any other program options.

Using the program

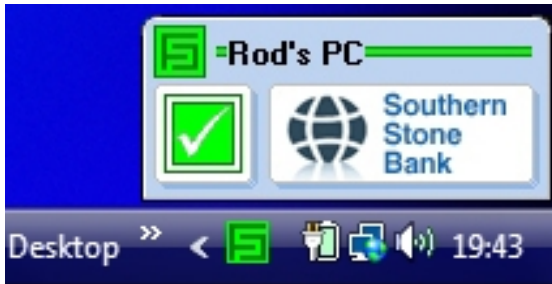
When Internet Explorer or FireFox is started the FCS program automatically starts and displays a small window on the PC screen and an icon on the task bar. The FCS SOLID window opens in the default bottom right corner of the screen but the window can be dragged to anywhere on the PC screen you wish.



The main part of the FCS SOLID window shows an icon of the currently active window on your PC screen. For example, the notepad icon is displayed if notepad is the active window. It is when you are running a web browser and connected to the Internet that the FCS program starts to protect you.

The FCS program alerts you in three modes – Green, Yellow, and Red.

Green Mode



When you believe you are connected to a web site that subscribes to the FCS service, **and you are**, a reassuring logo of the subscribing company is displayed along with a green symbol on the taskbar and in the top left of the window. When connected to the Internet, the FCS

SOLID program regularly checks for updates of new approved or cautionary sites

Yellow Mode



Yellow mode means the FCS SOLID program cannot identify the web site as a subscriber to the FCS service, and can therefore give no assurance about its validity. Proceed with caution if you are entering sensitive or secure information. As the FCS SOLID program displays logos of subscribers,

if you normally see a subscriber's logo and a green tick then treat this site with caution and contact that subscriber.

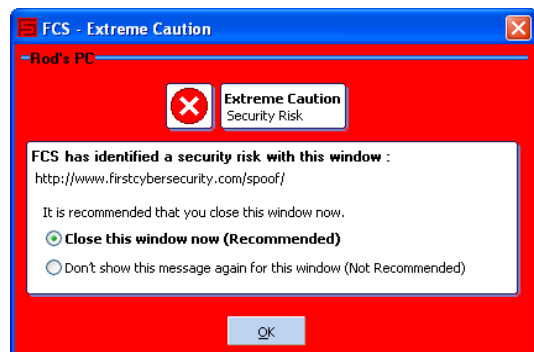
Red Mode



In red mode, the FCS SOLID program has identified a possible danger. Subscribers to the FCS service have identified this site as a potentially fraudulent site designed to trick you into giving sensitive or secure information. The FCS SOLID program regularly checks for new sites at risk –

this may be information made available within the last 30 minutes.

If a red mode situation occurs the warning window below also appears and you are asked to confirm acknowledgement of the warning. The options are to either close the window (recommended) or remove the warning window and proceed at your own risk. If the second option is chosen no further warnings will be given, even if you visit another Red mode site in this browser.

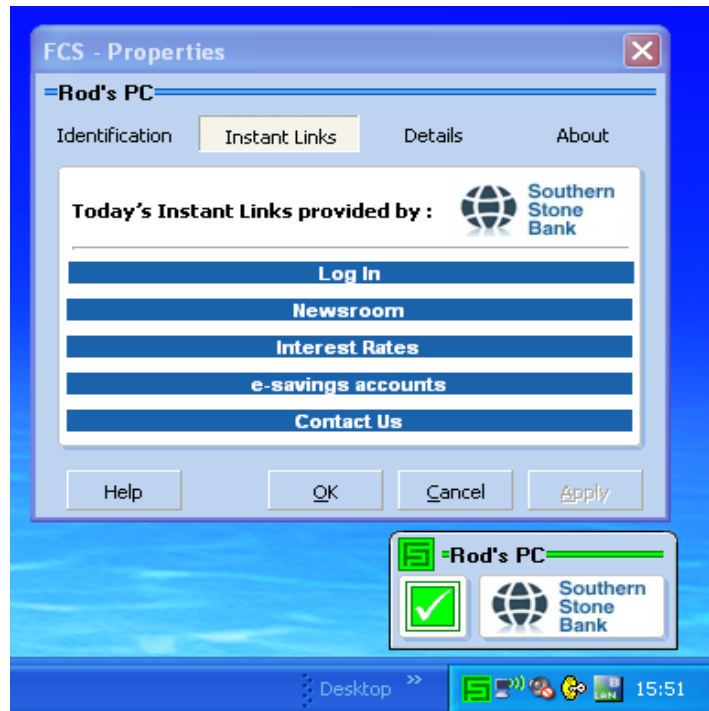


There is no reason to be concerned if you close the window, as the spoof has been detected. Do not submit any personal information to sites giving this warning.

If multiple web browser windows are open, FCS SOLID reports on the **currently active window**, which is the only one you can react with.

Instant Links

Left click your mouse on the FCS SOLID window and the Properties window will open showing five secure links provided by the subscriber web site that is the active window. If you change to another provider re-click the FCS SOLID window and the links will update to the new provider. If the FCS SOLID window is yellow or red, the FCS program will provide a list of secure links selected by FCS. Because these links are provided by subscribers to the FCS service and encrypted on your computer, it is safe to trust them as if you had typed them in yourself.



FCS Properties



Left click on the FCS SOLID window to display the 'FCS Properties' box, defaulting to display 'Instant Links'.

The 'About' tab displays copyright and software version information. It also shows the date of the latest database FCS has automatically downloaded.

'Instant Links' and the Identification screens can also be accessed from here.

SOLID Authentication™ logo

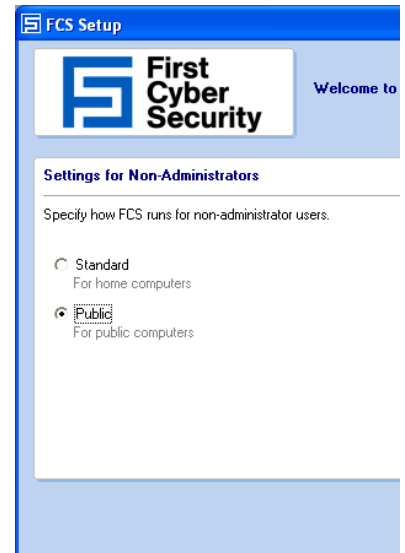
Look for the SOLID Authentication™ logo on sites you visit. This means the company you are visiting is a subscriber to the service and their logo should be displayed in the FCS SOLID window. Clicking on the SOLID Authentication™ logo takes you to the FCS web site.



Multi-User Installations – Corporate Mode – Internet Café Mode

As with most software installations you must have administrative rights to install this program. However, once installed, users without these rights can still use the program. By default each user will have the User ID and the language that was set during installation but these can be changed independently for each user, and the screen position of the FCS SOLID window for each user is also stored independently.

If you do not want individual non-administrative users to change these settings for public computers such as in an Internet Café or in a corporate environment the setup has options to restrict these changes as shown here.



Multi-Lingual Installations

Set Up also has the option to change the language dynamically, not just during installation. There is no need to restart the program. For a multi-user environment the language chosen for each user will be maintained. Therefore for any named user the program will support their own unique user ID, FCS SOLID window position, and language.

Summary

Just watch the FCS SOLID window, beware of red, be cautious with yellow, and be assured with green.



Please note that as the software is continuously developed your version may have minor cosmetic changes to the illustrations here. Availability of updates of the software, are notified in the 'About' box and by a message window, when available. Data updates are automatically downloaded when required.

Security 'at-a-glance'™